



TUMBLE DRYERS | GREEN EVOLUTION



FAGOR INDUSTRIAL



# 4UBDL8ZFST

FED-



# 8POP NJD-JOF

THE PERFECT BALANCE BETWEEN QUALITY AND PRICE.



## FEATURES

- Auto-reverse Drum: the drying process is more efficient; offers better uniformity, avoiding the tangling of big pieces.
- Frequency inverter: controls rotating speed and reverse drum action.
- Filter drawer with wide surface and improved airflow made of stainless steel.
- Outer casing in galvanized steel.
- "M Control" range: easy to use analogic control with time and temperature selection.
- Radial airflow circuit.
- Big loading door (opening of 180°).
- Transmission of movement by gear motor (direct drive).
- Cool Down: Anti-wrinkle at the end of cycle.

## OPTIONS:

- Optional screen to view time, temperature and program (VQUP3 programs). The technical menu can also be accessed without having to use the console.

- 01-7R0EFE

BHPSESZFSTDBOCFFBTJMZ  
DPOWFSUFEGSPN01-UP4FMG4FSWJDF  
BOEWJDFWFSTB



ONNERA USA

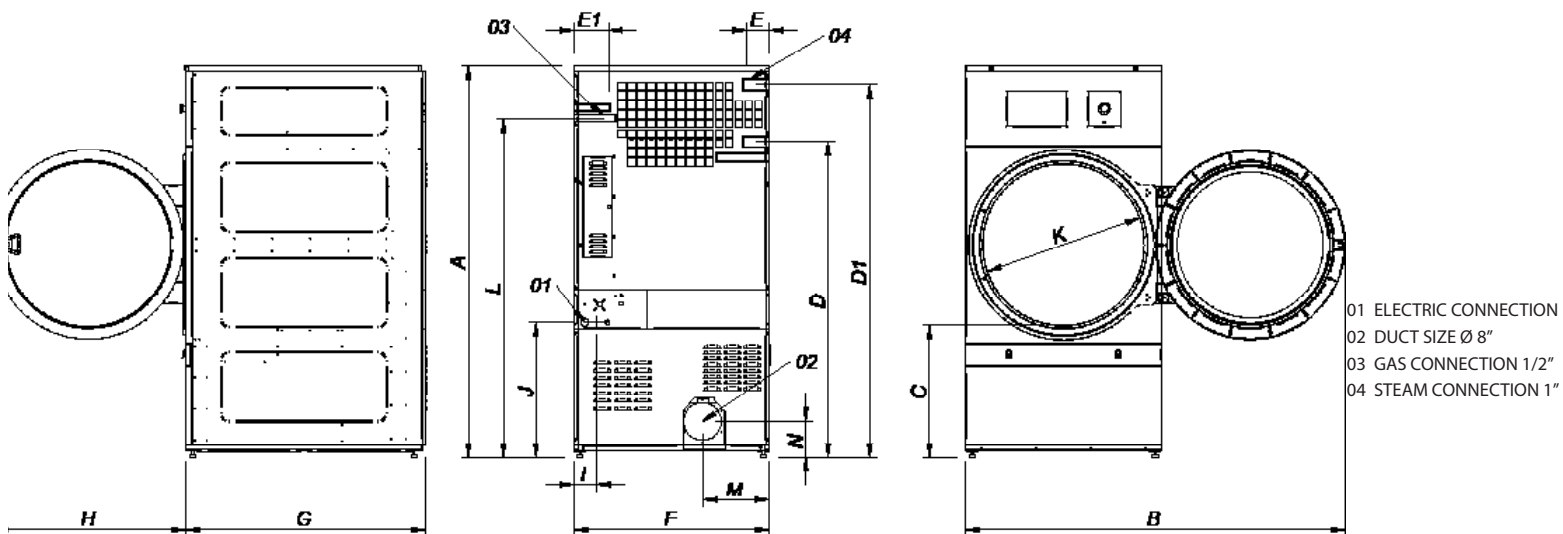
13105 NW 47th Ave  
Opa-locka-PSJEB33054  
64"

[www.fagorcommercial.com](http://www.fagorcommercial.com)



TECHNICAL DATA	UNIT.	FED- 65	FED- 80		
<b>CAPACITY</b>					
Capacity 1/18	lb	70	80		
Capacity 1/20	lb	60	75		
Hourly Output*	lb/h	59,3	138 / 9		
Evaporation capacity*	l/h	30,9	32,1		
<b>DRUM</b>					
Ø Drum	in	37.25	37.25		
Ø Door	in	31.50	31.50		
Door center height	in	41	41		
Load hole bottom height	in	64.50	64.50		
Drum length	in	30.75	36.85		
Drum volume	CuFt	19.4	23		
<b>POWER</b>					
Drum motor power	HP	0,75	0,75		
Fan motor power	HP	0,75	0,75		
Electric heating power	Kw	30	36		
Total electric power (elec.model)	Kw	31,15	37,15		
Gas heating power	BTU	140,000	140,000		
Total electric power (gas model)	Kw	1,15	1,15		
Steam heating power	kw	50,1	50,1		
Steam heating power (gas model)	kw	1,15	1,15		
<b>CONNECTIONS</b>		<b>ELECTRICAL</b>	<b>STEAM / GAS</b>	<b>ELECTRICAL</b>	<b>STEAM / GAS</b>
Tension 120 V - I / 230V - I + N + T	Nº x mm2 / A	-	3 x 1,5 / 20A	-	3 x 1,5 / 20A
Tension 230V - III + T	Nº x mm2 / A	4 x 35 / 100A	3 x 1,5 / 20A	4 x 50 / 125A	3 x 1,5 / 20A
Tension 400V - III + N + T	Nº x mm2 / A	5 x 16 / 63A	3 x 1,5 / 20A	5 x 16 / 63A	3 x 1,5 / 20A
Ø Gas inlet	BSP	1/2"		1/2"	
Ø Steam inlet	BSP	1"		1"	
Ø Condensed (Steam models)	BSP	1"		1"	
<b>DIMENSIONS / PACKING DIMENSIONS</b>					
Net Width / Gross Width	in	38.75 / 42		38.75 / 42	
Net Depth / Gross Depth	in	41.50 / 45.50		47.60 / 51.60	
Net Height / Gross Height	in	76.60 / 82		76.60 / 82	
Height without heating battery	in	-		-	
Net weight / Gross weight	lb	507 / 573		573 / 628	
<b>OTHERS</b>					
Max airflow	CFM	706		706	
Ø Duct Size	in	8		8	
Sound level	dB	65		65	

\* It may vary depending on the type of heating, filter cleanliness or extraction type.



	A	B	C	D	D1	E	E1	F	G	H	I	J	K	L	M	N
FED-65	76.60	75	25	62.60	74	4.50	6.85	38.75	41.50	37.75	4.30	26.75	31.60	67.25	13.35	7
FED-80	76.60	75	25	62.60	74	4.50	6.85	38.75	47.60	37.75	4.30	26.75	31.60	67.25	13.35	7

